



C281M-D (03/21) CM400/CM400-SW Corner Mount Adapter

625 W. Alluvial Ave.
Fresno, California 93711
USA

In North America & Canada:
Tel (800) 289-9100
FAX (800) 289-9150

International Customers:
Tel +1 (559) 292-1981
FAX +1 (559) 348-1120

www.pelco.com

NOTE: Fasteners to secure the CM400 or CM400-SW to a load-bearing solid surface are not supplied.

NOTE: Conduit knockouts are supplied on the block-off plate, offering greater flexibility in installation options.

IMPORTANT SAFEGUARDS AND WARNINGS

Prior to installation and use of this product, the following WARNINGS should be observed.

1. Installation and servicing should only be done by qualified service personnel and conform to all local codes.
2. Installation shall be done in accordance with all local and national electrical and mechanical codes utilizing only approved materials.
3. Use only installation methods and materials capable of supporting four times the maximum specified load.
4. Use stainless steel hardware to fasten the mount to outdoor surfaces.
5. To prevent damage from water leakage when installing a mount outdoors on a roof or wall, apply sealant around the bolt holes between the mount and mounting surface.

DESCRIPTION

The CM400 and CM400-SW Corner Mount Adapters are designed for use with the LWM41 Legacy® Series Wall Mount when mounting on the corner of a structure is required.

The CM400 and CM400-SW are fabricated from aluminum and will support up to 75 lb (33.75 kg).

INSTALLATION

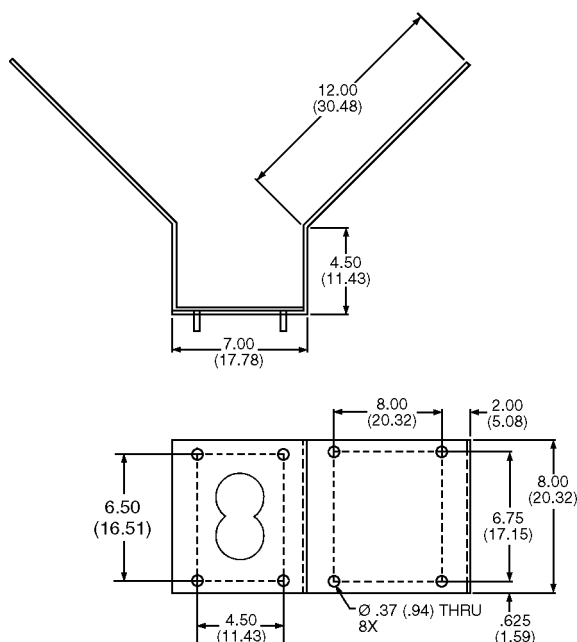
When mounting the CM400 or CM400-SW to a wall, make certain that the mounting surface is capable of supporting the full load of the mount, pan/tilt, enclosure, and camera.

1. Drill holes in the mounting surface using the CM400 or CM400-SW mount as a template and attach the mount securely with fasteners of a suitable size.
2. Attach and secure the LWM41 Wall Mount to the four 5/16-inch studs provided on the CM400 or CM400-SW with the supplied hardware.
3. Attach the pan/tilt and enclosure to the LWM41 Wall Mount according to the instructions provided with the mount.

Block-Off Plate Installation

Included with the CM400 or CM400-SW is a block-off plate. Depending on the particular installation requirements of the CM400 or CM400-SW and LWM41 Wall Mount, the supplied block-off plate may be used as follows:

The block-off plate or "gland" plate is designed to be used with the CM400 or CM400-SW as a means to close the 2.5-inch diameter hole in the mounting flange of the wall mount. If feedthrough wiring from the mount through the CM400 or CM400-SW is not needed, then the block-off plate may be installed between the LWM41 and the CM400 or CM400-SW. This block-off plate installation will protect the internal cavity of the wall mount. It is recommended that the block-off plate be used in outdoor applications.



NOTE: VALUES IN PARENTHESES ARE CENTIMETERS; ALL OTHERS ARE INCHES

Figure 1. CM400, CM400-SW Dimension Drawing

SPECIFICATIONS

Adapter Mounting:	Four 5/16-inch studs provided for mounting LWM41 to CM400 or CM400-SW (nuts and split lock washers supplied)
Suggested Mounting Method:	Secure to solid mounting surface with eight fasteners of a suitable size (suggested minimum 1/4-inch diameter, not supplied)
Construction:	Aluminum
Dimensions:	See Figure 1
Finish:	Gray polyester powder coat
Maximum Load:	75 lb (33.75 kg)
Weight:	3 lb (1.36 kg)

(Design and specifications are subject to change without notice.)

WARRANTY AND RETURN INFORMATION

WARRANTY

Pelco will repair or replace, without charge, any merchandise proved defective in material or workmanship for a period of one year after the date of shipment. Exceptions to this warranty are as noted below:

- Five years on FT/FR8000 Series fiber optic products.
 - Three years on Genex® Series products (multiplexers, server, and keyboard).
 - Three years on Camclosure® and fixed camera models, except the CC3701H-2, CC3701H-2X, CC3751H-2, CC3651H-2X, MC3651H-2, and MC3651H-2X camera models, which have a five-year warranty.
 - Two years on standard motorized or fixed focal length lenses.
 - Two years on Legacy®, CM6700/CM6800/CM9700 Series matrix, and DF5/DF8 Series fixed dome products.
 - Two years on Spectra®, Esprit®, ExSite™, and PS20 scanners, including when used in continuous motion applications.
 - Two years on Esprit® and WW5700 Series window wiper (excluding wiper blades).
 - Eighteen months on DX Series digital video recorders, NVR300 Series network video recorders, and Endura™ Series distributed network-based video products.
 - Eighteen months on DX Series digital video recorders, NVR300 Series network video recorders, Endura™ Series distributed network-based video products, and TW3000 Series twisted pair transmission products.
 - One year (except video heads) on video cassette recorders (VCRs). Video heads will be covered for a period of six months.
 - Six months on all pan and tilts, scanners or preset lenses used in continuous motion applications (that is, preset scan, tour and auto scan modes).
- Pelco will warrant all replacement parts and repairs for 90 days from the date of Pelco shipment. All goods requiring warranty repair shall be sent freight prepaid to Pelco, Fresno, California. Repairs made necessary by reason of misuse, alteration, normal wear, or accident are not covered under this warranty.
- Pelco assumes no risk and shall be subject to no liability for damages or loss resulting from the specific use or application made of the Products. Pelco's liability for any claim, whether based on breach of contract, negligence, infringement of any rights of any party or product liability, relating to the Products shall not exceed the price paid by the Dealer to Pelco for such Products. In no event will Pelco be liable for any special, incidental or consequential damages (including loss of use, loss of profit and claims of third parties) however caused, whether by the negligence of Pelco or otherwise.
- The above warranty provides the Dealer with specific legal rights. The Dealer may also have additional rights, which are subject to variation from state to state.

If a warranty repair is required, the Dealer must contact Pelco at (800) 289-9100 or (559) 292-1981 to obtain a Repair Authorization number (RA), and provide the following information:

1. Model and serial number
2. Date of shipment, P.O. number, Sales Order number, or Pelco invoice number
3. Details of the defect or problem

If there is a dispute regarding the warranty of a product which does not fall under the warranty conditions stated above, please include a written explanation with the product when returned.

Method of return shipment shall be the same or equal to the method by which the item was received by Pelco.

RETURNS

In order to expedite parts returned to the factory for repair or credit, please call the factory at (800) 289-9100 or (559) 292-1981 to obtain an authorization number (CA number if returned for credit, and RA number if returned for repair).

All merchandise returned for credit may be subject to a 20% restocking and refurbishing charge.

Goods returned for repair or credit should be clearly identified with the assigned CA or RA number and freight should be prepaid. Ship to the appropriate address below.

If you are located within the continental U.S., Alaska, Hawaii or Puerto Rico, send goods to:

Service Department
Pelco
625 W. Alluvial Ave.
Fresno, California 93711 USA

If you are located outside the continental U.S., Alaska, Hawaii or Puerto Rico and are instructed to return goods to the USA, you may do one of the following:

If the goods are to be sent by a COURIER SERVICE, send the goods to:

Pelco
625 W. Alluvial Ave.
Fresno, California 93711 USA

If the goods are to be sent by a FREIGHT FORWARDER, send the goods to:

Pelco c/o Expeditors
473 Eccles Avenue
South San Francisco, CA 94080 USA
Phone: 650-737-1700
Fax: 650-737-0933

REVISION HISTORY

Manual #	Date	Comments
C281M-C	10/99	Revised to new format. Removed all references to SCM400 and ST4.
C281M-D	03/21	Updated Pelco logo and address, added new model CM400-SW.